

Lesson 6
God Put Adam and Eve
in the Garden of Eden.



Before the Beginning

CREATION

2,0



GOD
Father
Son
Spirit

"... from everlasting to everlasting, You are God."
Psalm 90:2

God's Angels
 Lucifer
Satan
 Demons

Adam
 Eve

Cain
 Abel
 Seth

Noah
 Shem
 Ham
 Japheth

TABLE OF NATIONS
 Babel

Abra
 Sa
 L

FROM ADAM TO NOAH

Adam
 Seth
 Enosh
 Cainan
 Mahalaleel
 Jared
 Enoch
 Methuselah
 Lamech
 Noah

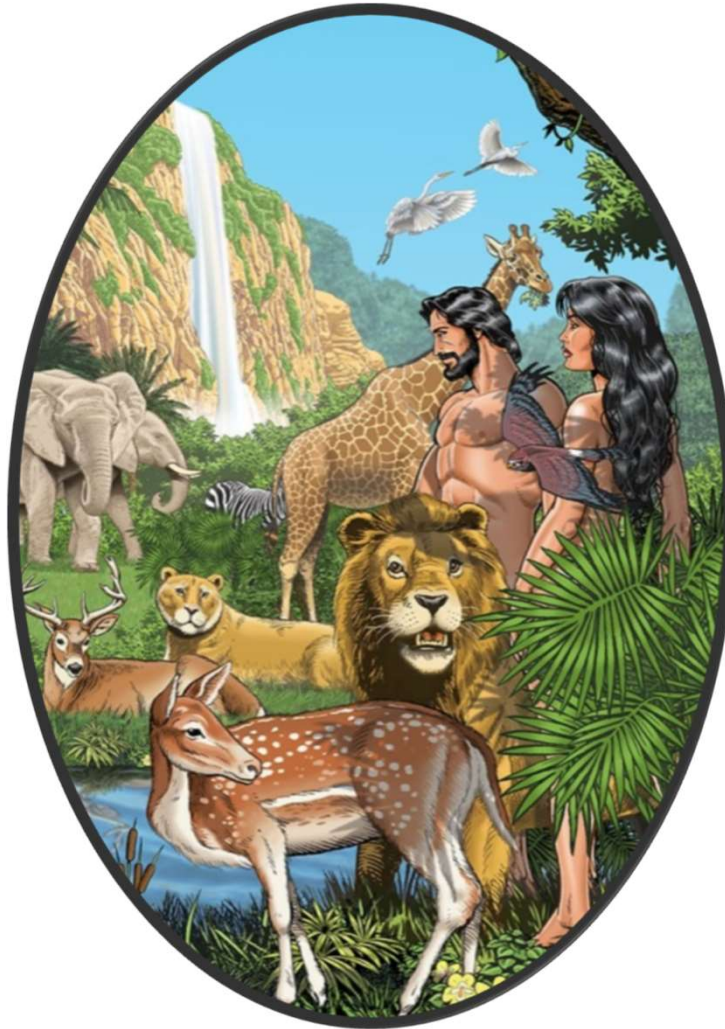
FROM NOAH TO ABRAHAM

Noah
 Shem
 Arphaxad
 Cainanan
 Shelah
 Eber
 Peleg
 Reu
 Serug
 Nahor
 Terah
 Abraham

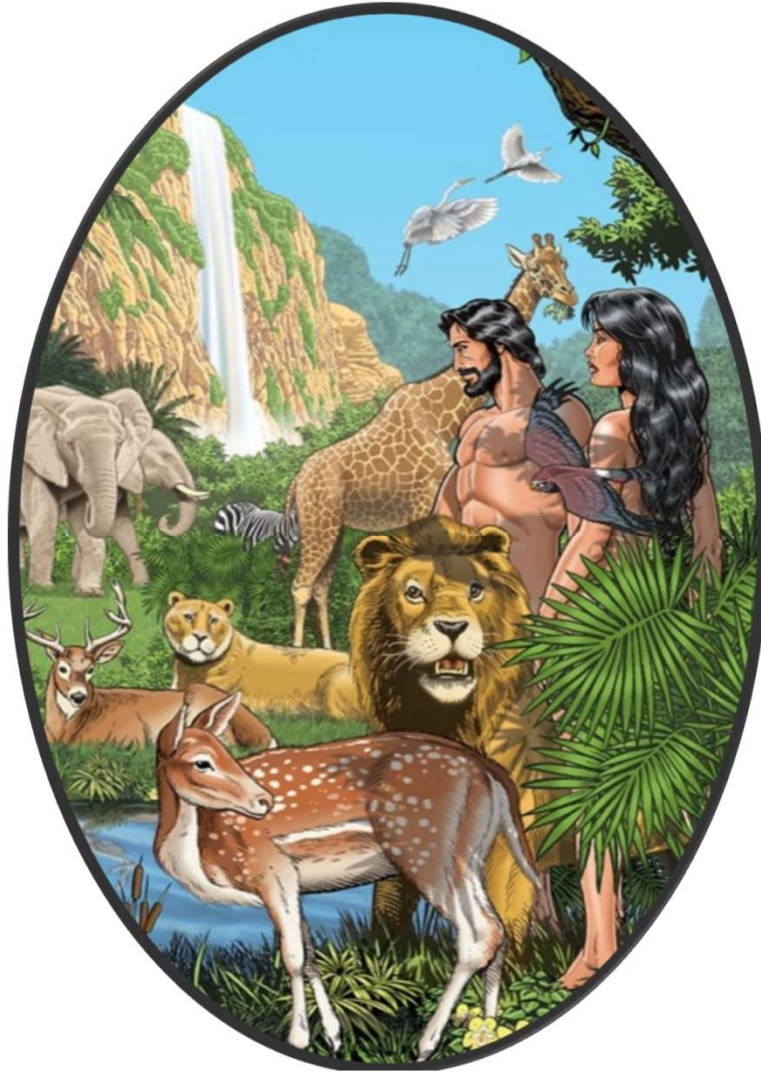
THE LINE OF THE DELIVERER • THE LINE OF THE DELIVERER • THE LINE OF THE DELIVERER

1. God Finished Making All Things.

(Genesis 2:1)



2. God Rested.

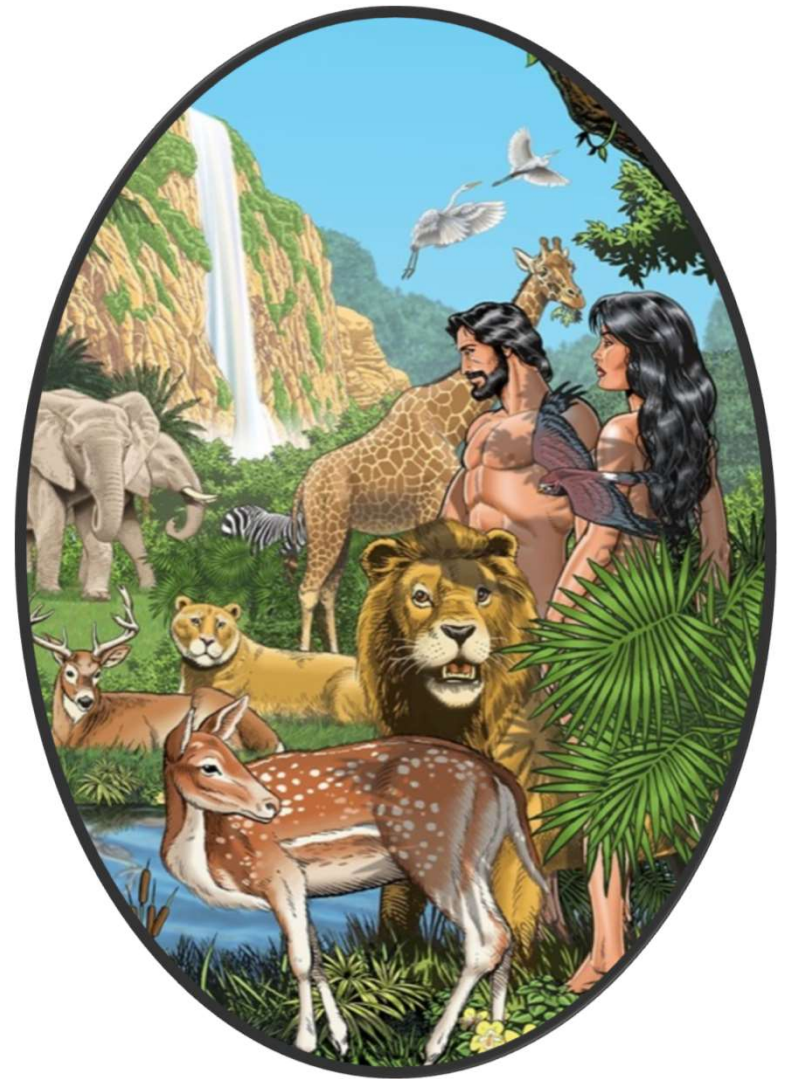


(Genesis 2:2)

God rested on the 7th day.

(Isaiah 40:28)

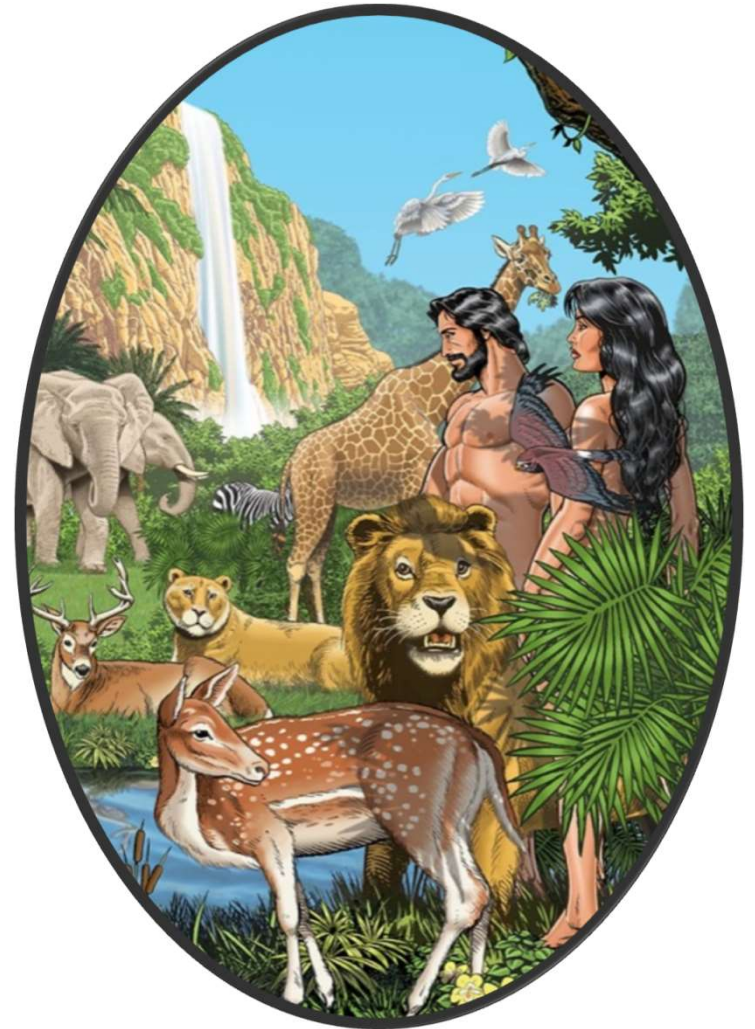
God was not tired; God was finished making all things.



3. God Made the Garden of Eden for Adam and Eve.

(Genesis 2:8)

God is love,
so God made a beautiful home
for Adam and Eve.



4. God Made Two Trees in the Garden of Eden.

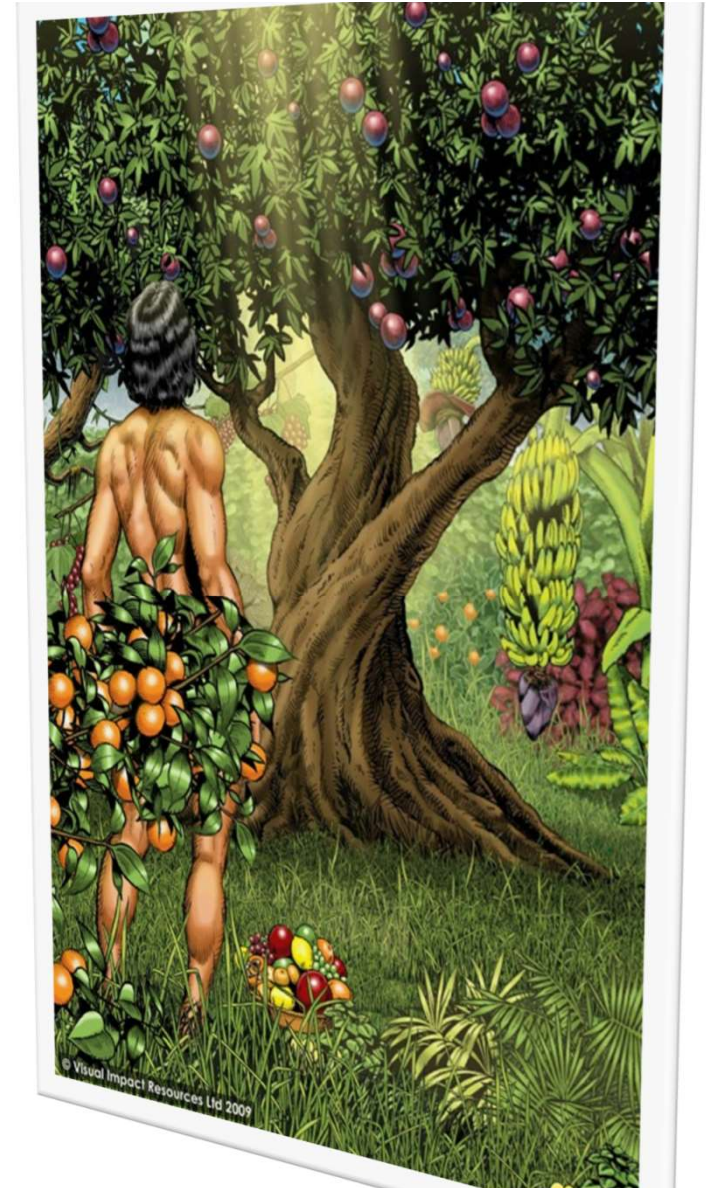


God made two trees.

(Genesis 2:9)

1. The tree of life

**2. The tree of knowledge (*know*)
of good and evil (*bad*).”**



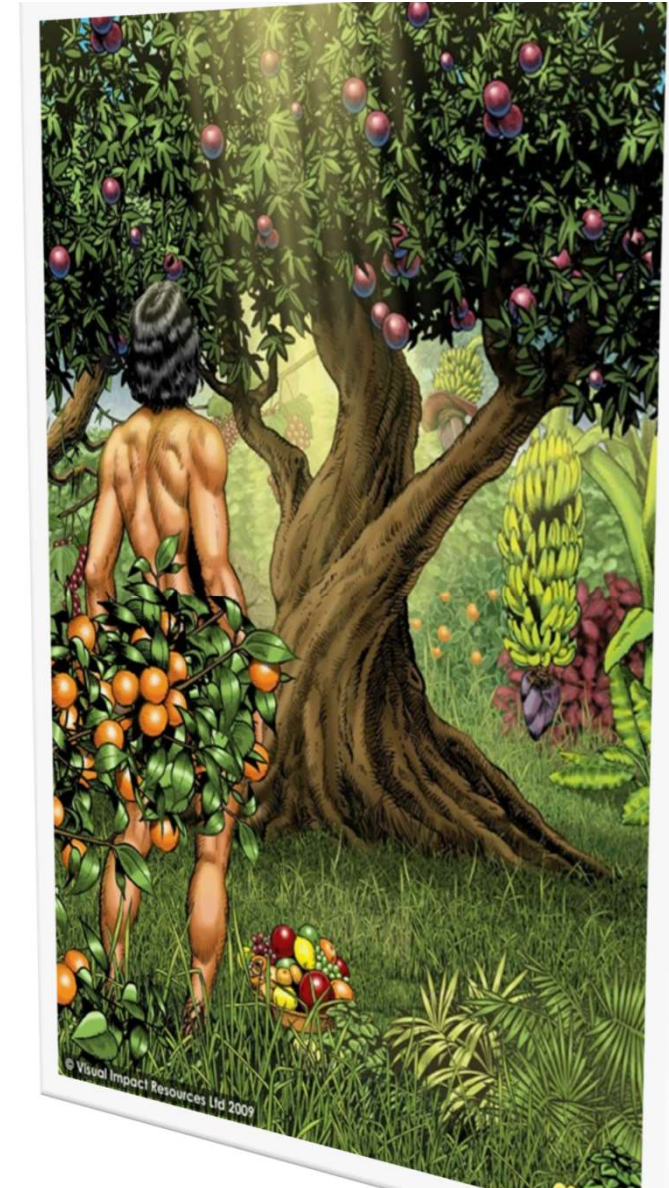
The tree of life

(Genesis 2:16)

God said, “Yes, you can eat...”

God gives all life.

Man joined with God = eternal life



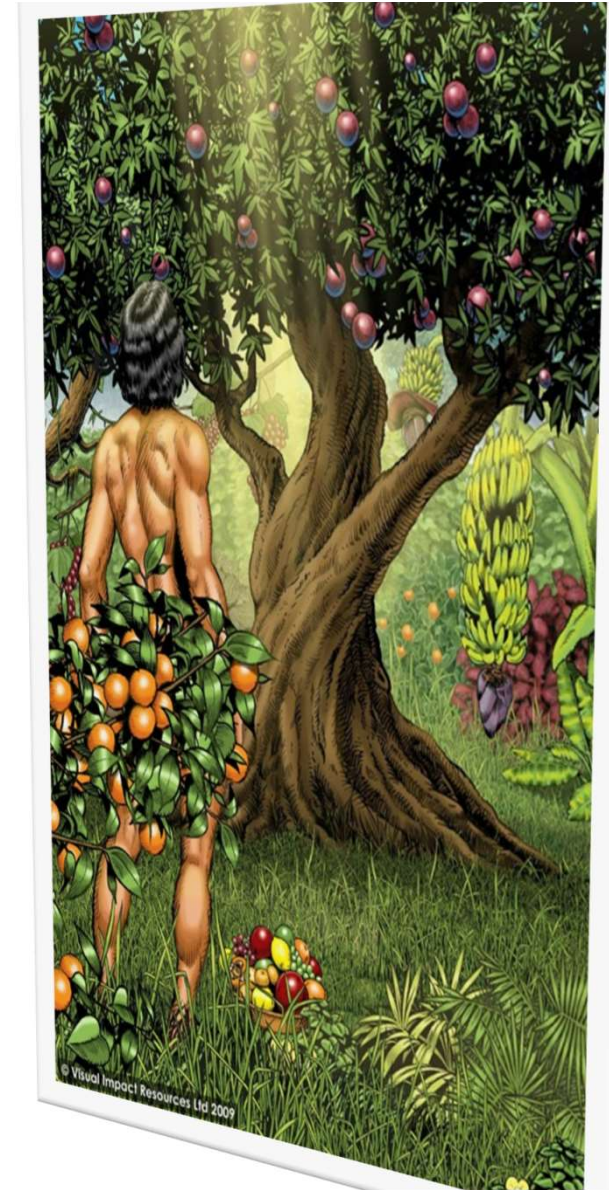
The **tree of knowledge** (*know*)
of good and evil (*bad*).”

(Genesis 2:17)

God said, “No, you may NOT eat...”

Man must believe God to have life.

Not believing God = death



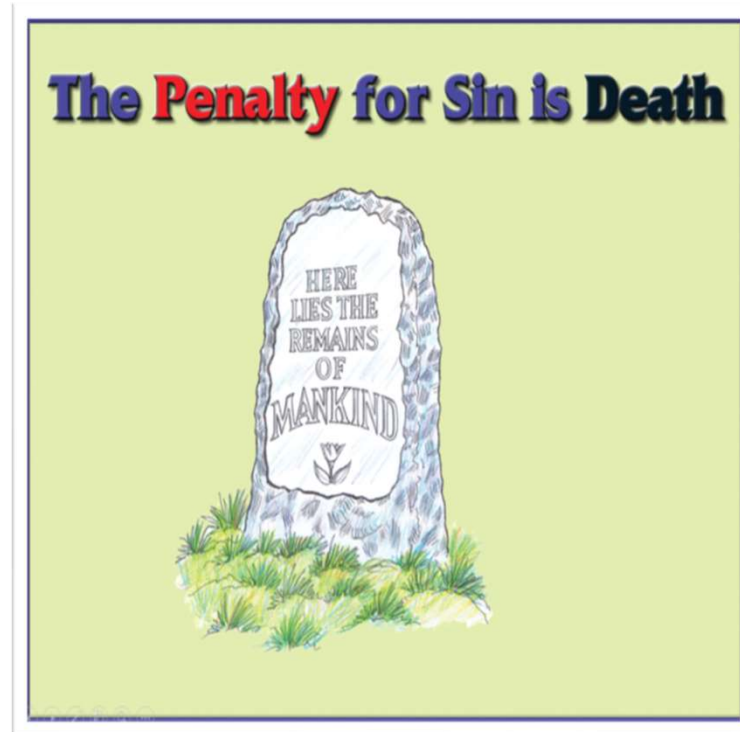
5. Death Is the Punishment (penalty)
for Disobedience (not obey) to God.

The Penalty for Sin is Death



(Genesis 2:17)

God told Adam that disobeying (**not obey**) God would result (**happen**) in death.



Disobeying God = Not believing God = Death

The Penalty for Sin is Death



Death = Separation

1. Spiritual death

Separation from God

2. Physical (body) death

Separation of man's body and spirit

3. Eternal death

Forever separation from God (good and life)

Death = Branch broken off (**separated**) from a tree (**life**).



The Penalty for Sin is Death

Spiritual Death

**Separation of man's
spirit from God**

Physical Death

**Separation of man's
spirit from his body**

Eternal Death

**Separation of man's
body, soul and spirit
from God forever**



GOD LOVES YOU.

GOD WANTS YOU TO HAVE LIFE.

GOD WANTS YOU TO ENJOY HIM
FOREVER.